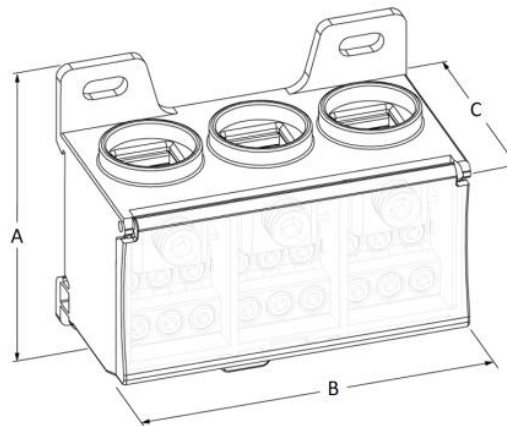


# Product Datasheet

## RPT3005



### Main

Family	Compact Distribution Blocks		
Version	3 Pole		
Code	RPT3005		
Reference	RPT 160-6 S		
Number per package	1		
In (A)	<b>IEC/EN</b>	<b>160</b>	
	UL	175	
Weight (Kg)	0.336		
A (mm)	75		
B (mm)	85		
C (mm)	48		

## Technical Data

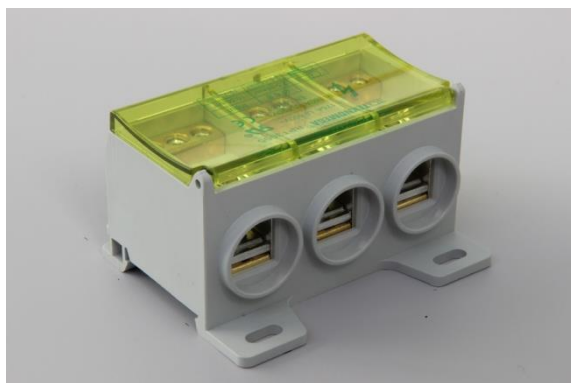
Type	3 Pole 6 Outputs 160 A					
In: 160 A	COFLEX* L (mm)	Stripped wire (mm <sup>2</sup> )	Wire with ferrule (mm <sup>2</sup> )	No.	Dim. (mm)	Tight. Torque (Nm)
IN	9-13	10 ÷ 70	10 ÷ 50	1	13.5x11.5	10
OUT	-	2.5 ÷ 16	2.5 ÷ 16	6	Ø 6.8	3
I <sub>cw</sub> (kA)	11					
I <sub>pk</sub> (kA)	30					
U <sub>i</sub> (V)	1000					

**I<sub>cc pk</sub>** = Short-circuit current peak value expressed in kA

**I<sub>cw</sub>** = Effective value of short-circuit current, duration equal to 1 second, expressed in kA as per standard IEC 60947-7-1

**U<sub>i</sub>** = Nominal Insulation voltage

\*See COFLEX technical features



## Technical Features

**Insulating body:** PA 66 UL 94-V0, gray RAL 7035, halogen free

**Cover:** PC UL 94-HB, transparent yellow, halogen free

**Conduction block:** Brass

**Clamps:** Galvanized steel and Al alloy

**Screws:** Galvanized steel

**Index protection IP20** guaranteed with the following minimum requirements:

- IN: COFLEX dimensions
  - 6x9x0.8,
  - 10x13x0.5
- All inlet/outlets are connected and cables and/or COFLEX are unsheathed for the minimum necessary length.

**Continuous working temperature: -30°C ... +75°C**

**Compliant with standard IEC 60947-7-1**

**UL 1059 standard recognized.**

Please contact Teknomega for non-specified tolerances.